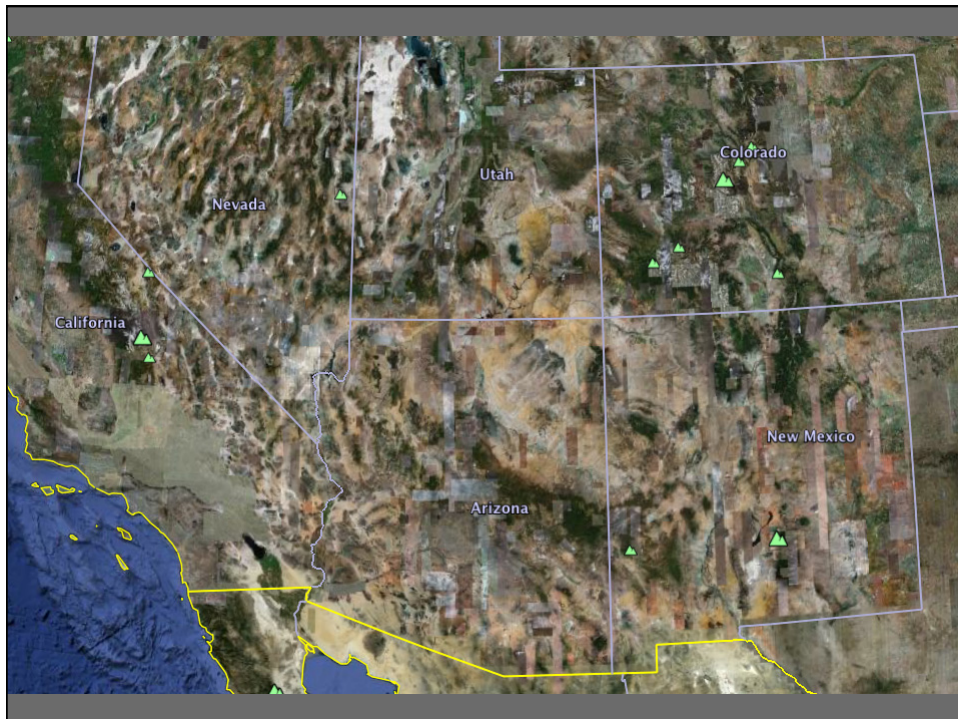
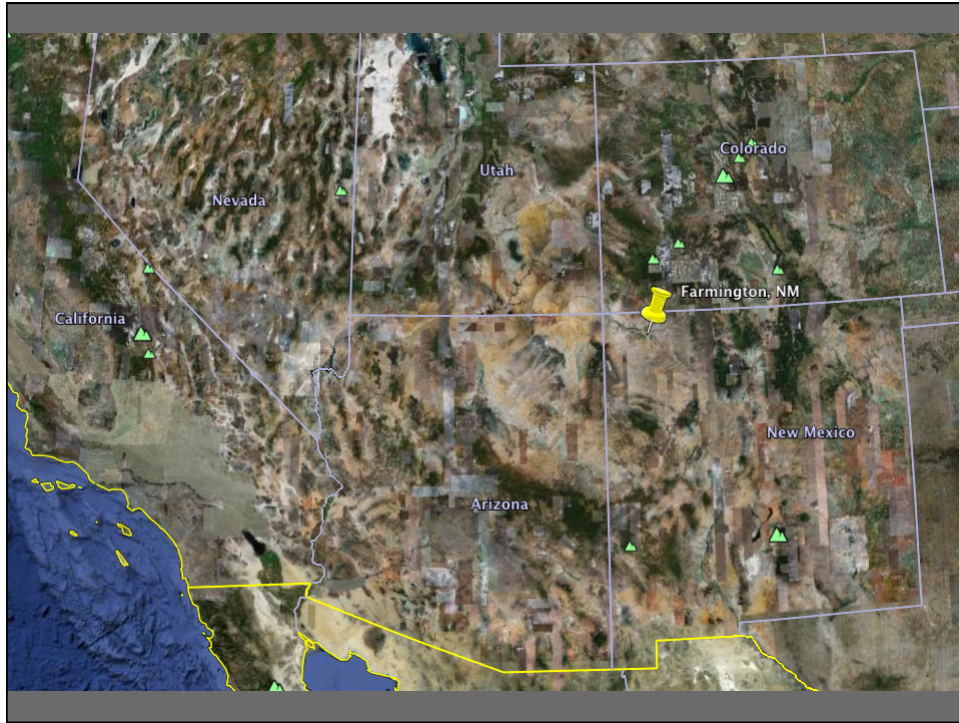


"Awe is the most reverent of feelings. You feel, when you are in awe, that you are human, that your mind is dwarfed by what it confronts, that you cannot capture it in a set of beliefs, and that you had best keep your mouth closed and your mind open while awaiting further disclosure."

--Paul Woodruff





Bisti/De-Na-Zin Wilderness
New Mexico



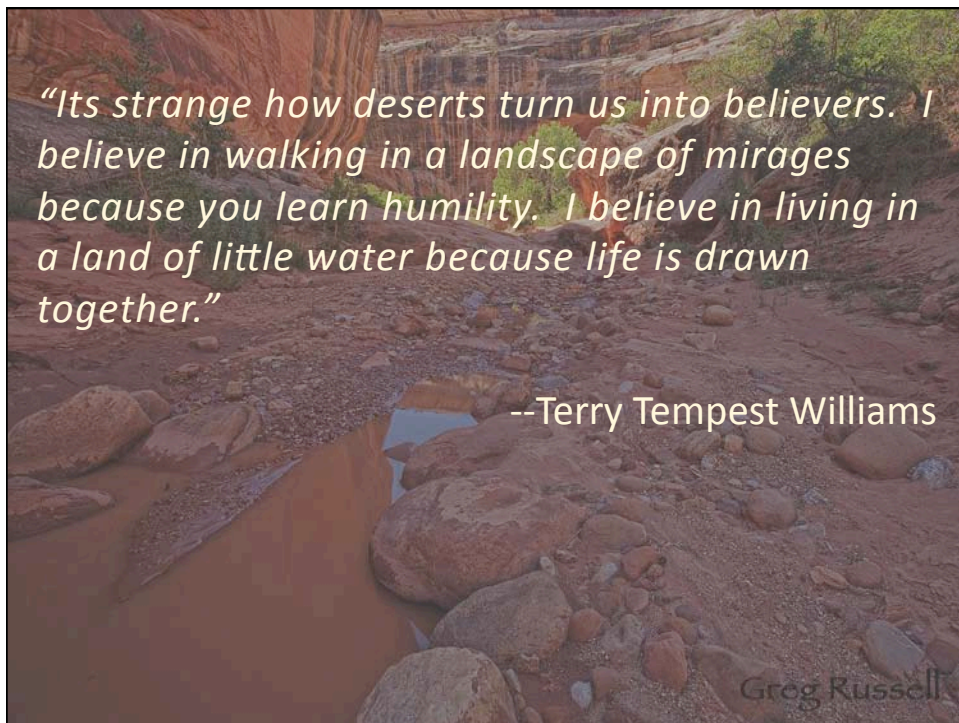
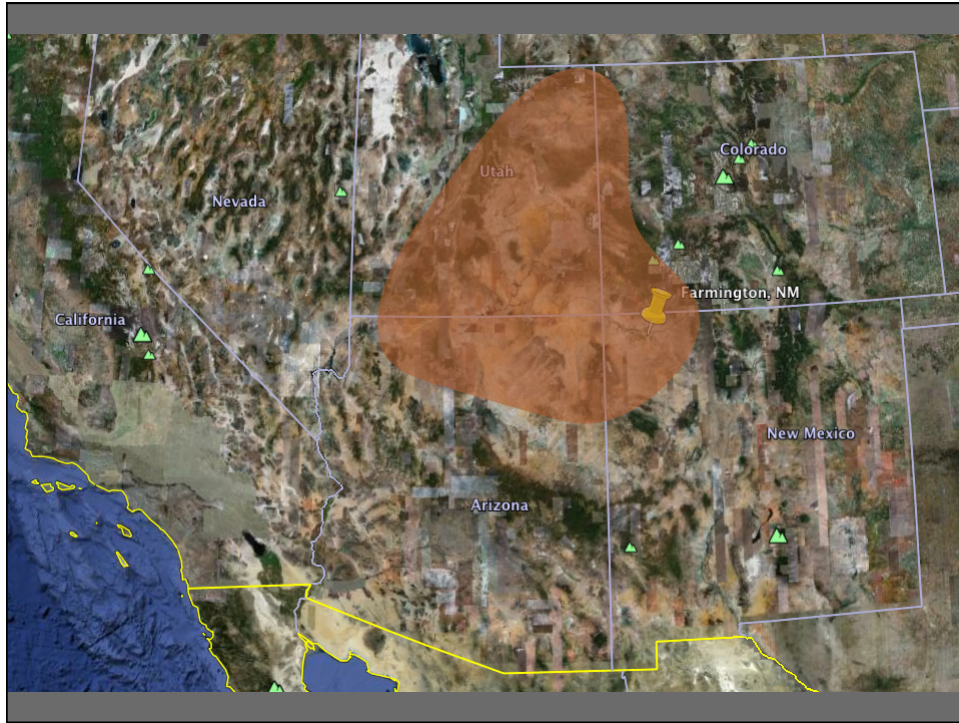
Greg Russell



Bisti/De-Na-Zin Wilderness
New Mexico



Navajo Dwelling (ca. 1700-1750)
New Mexico





Bryce Canyon National Park

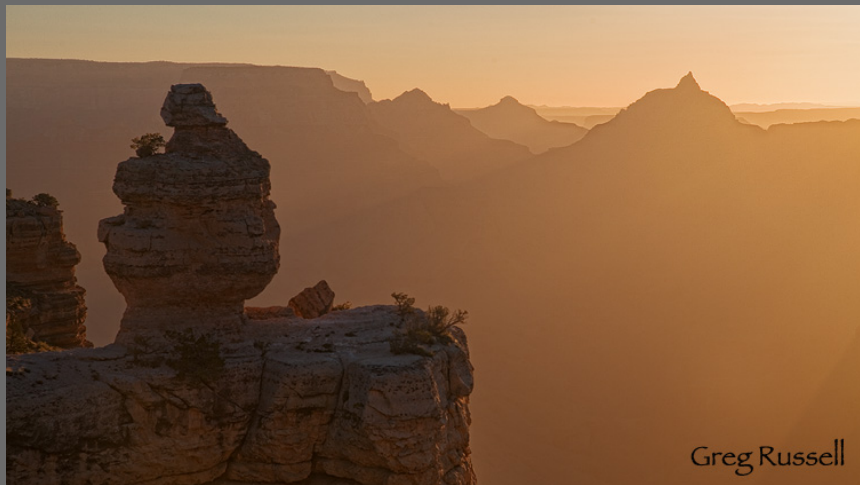


*Slot Canyon, Grand Staircase-
Escalante National Monument*

1.9 million acres of land were set aside in this national monument by President Clinton in 1996.



Capitol Reef National Park



*Vishnu's Temple
Grand Canyon National Park*

*Paria River-Vermillion Cliffs
Wilderness, Arizona*



*The Golden Cathedral,
Neon Canyon*

Glen Canyon National Recreation Area





Slot Canyon, Utah
BLM Land, near the Vermillion Cliffs



Waterholes Slot Canyon
Navajo Nation, Arizona



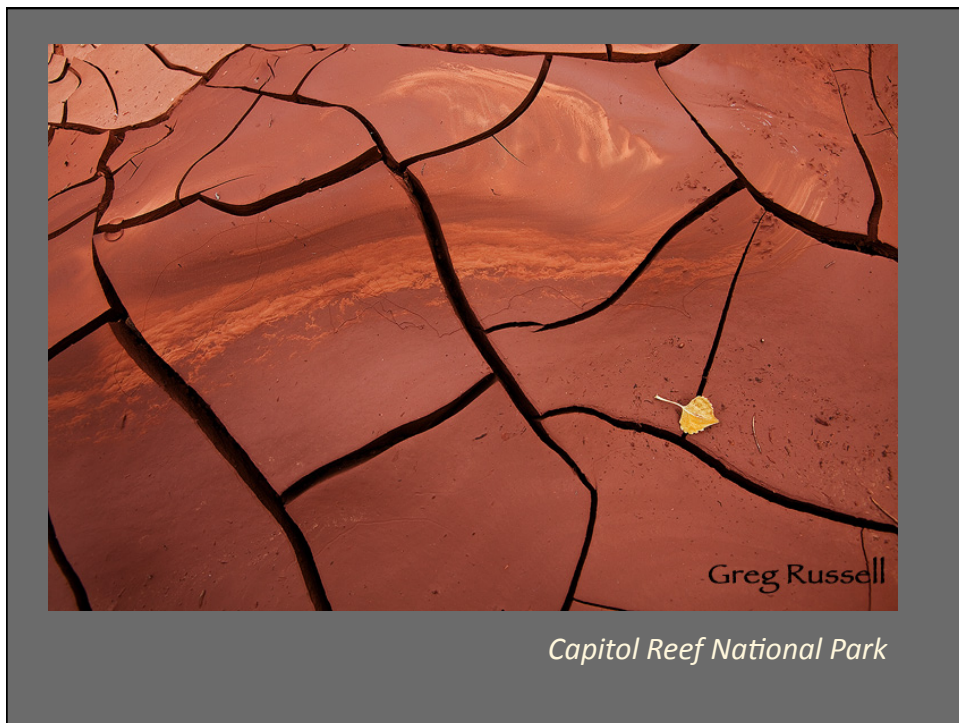
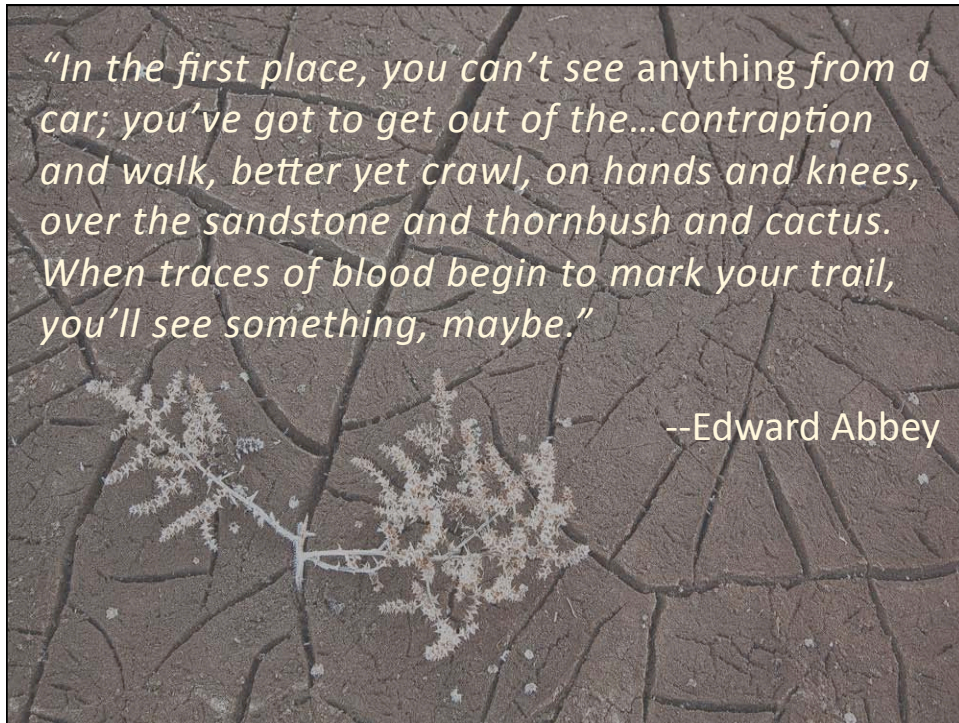
Greg Russell

San Rafael Swell, Utah



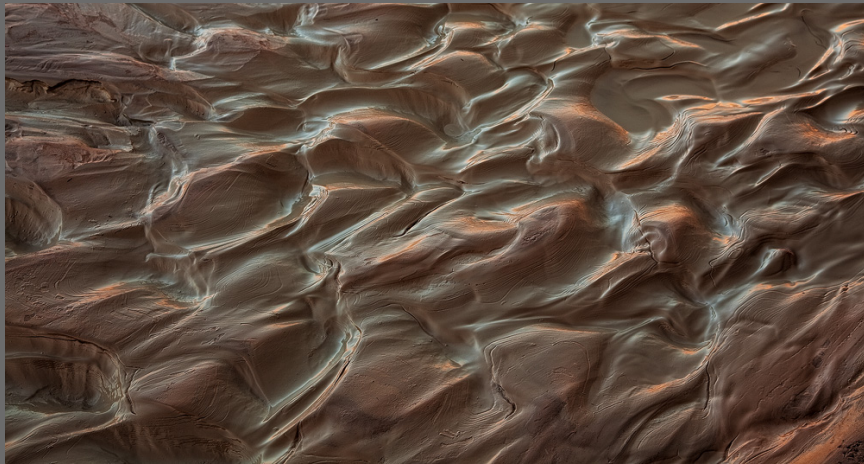
Kanarra Creek, Utah

Greg Russell





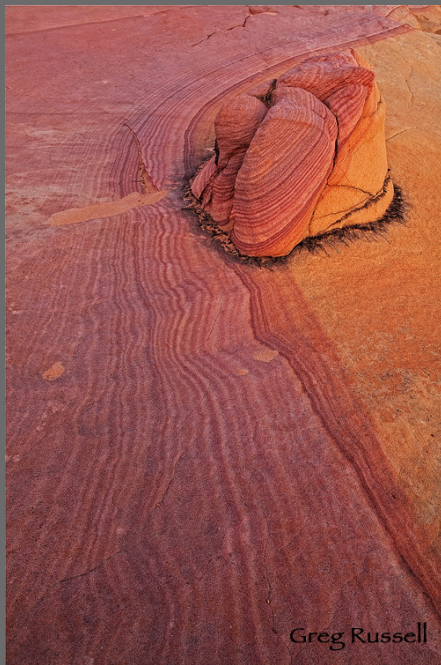
Zion National Park
Virgin River reflecting cliffs during early morning



Paria River, Utah
Mud reflecting early morning light



Paria River-Vermillion Cliffs Wilderness, Arizona
Sandstone Rainbow



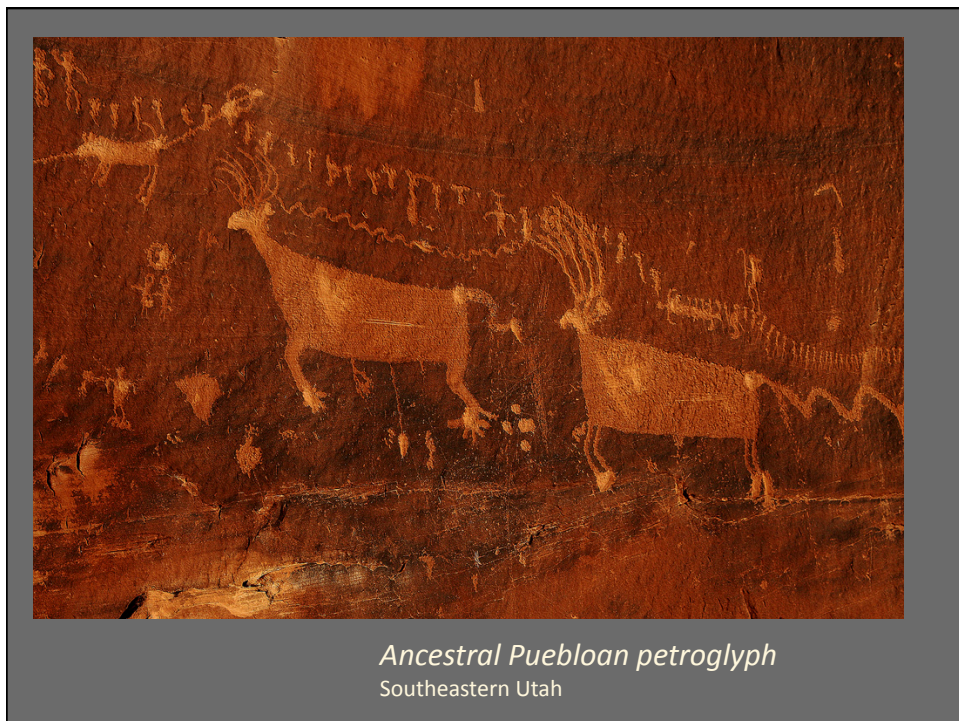
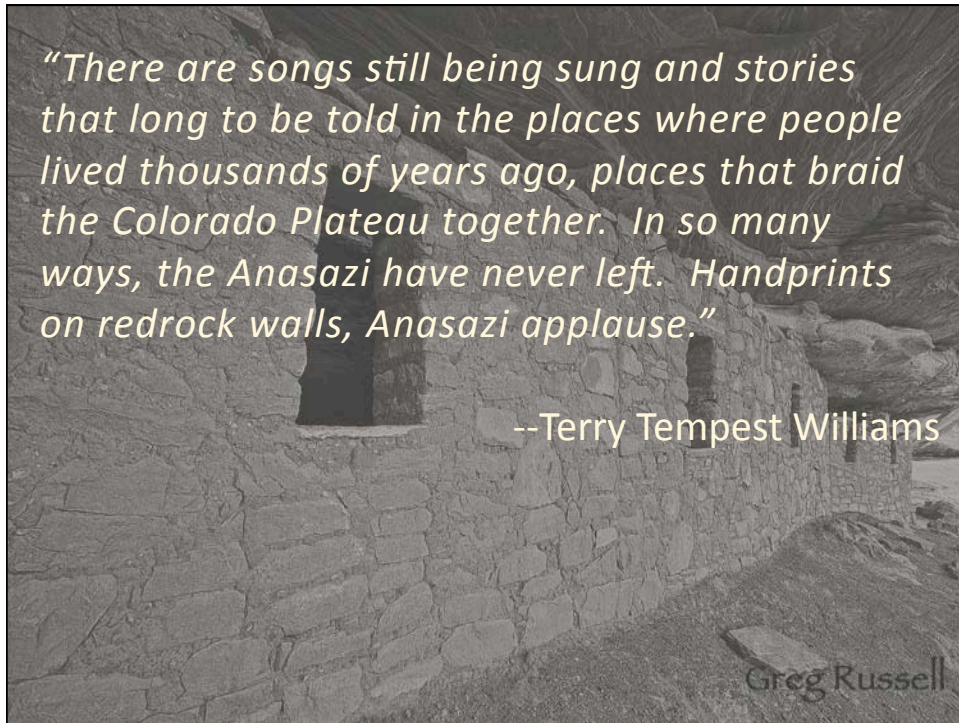
*Paria River-Vermillion Cliffs
Wilderness, Arizona*
Sandstone gone wild



Coral Pink Sand Dunes
Utah

Paria River, Utah
Cracked earth, Sandstone wall



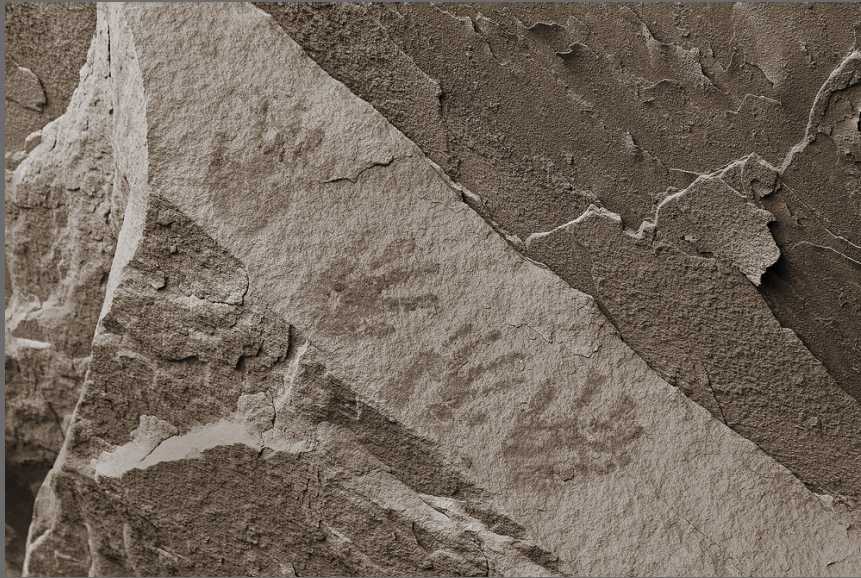


Ancestral Puebloan granary
Southeastern Utah



Ancestral Puebloan granary
Southeastern Utah





Ancestral Puebloan Handprints
Southeastern Utah



Greg Russell

Ancestral Puebloan Dwelling
Southeastern Utah



Grand Staircase-Escalante National Monument
Hundred Handprints (163, actually...Anasazi applause?)

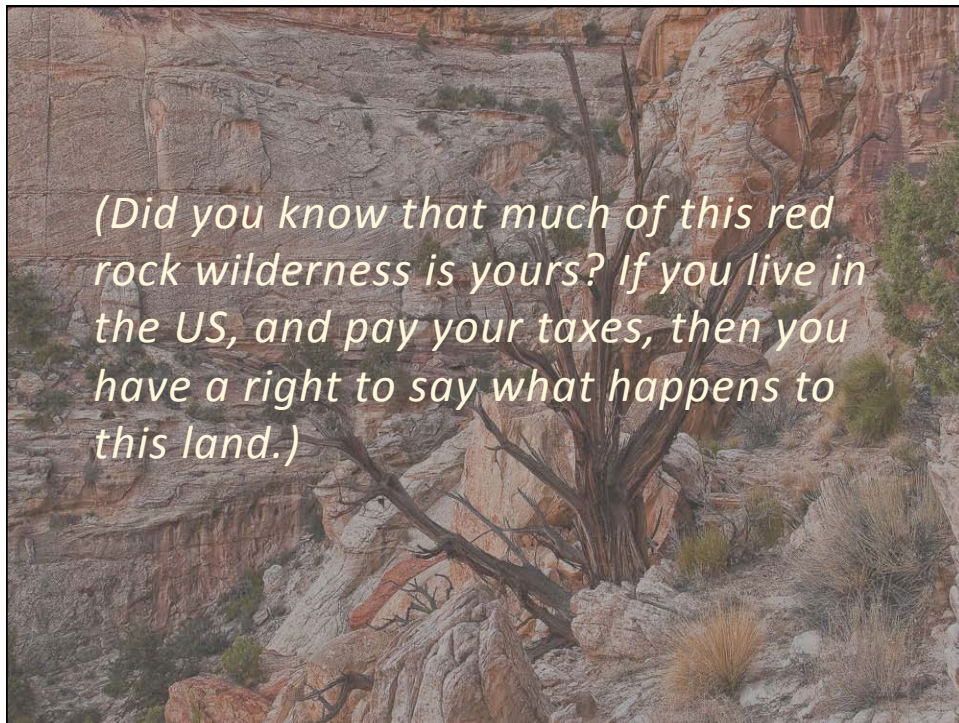


"Barrier Canyon" style pictograph
San Rafael Swell



"Barrier Canyon" style pictograph
San Rafael Swell

Greg Russell



(Did you know that much of this red rock wilderness is yours? If you live in the US, and pay your taxes, then you have a right to say what happens to this land.)